

## Zombie Apocalypse

To: APECHS faculty and student body

From: Brenda Brito

Date: October 14, 2014

Subject: Zombie Apocalypse Warning and Preparations

### The Situation

The Las Cruces Police department have just contacted us that a flock of undead beings (zombies) will invade our school in about 20 minutes. This is nothing compared to what we have dealt with before...this is a new type of threat. Nevertheless, this was a last minute notification thereby preventing us from taking faster evacuation procedures. For those of you who drive, we apologize but you are not allowed to leave the campus. Due to huge traffic jams and mobs of people filling the streets. Under these circumstances, the plan is to keep you within the protection of the school and wait for your families to pick you up. The faculty and I are now working with the police department to find the safest ways of approaching this threat. However, it is also your responsibility to carry out these safety procedures.

### Information on the Zombies

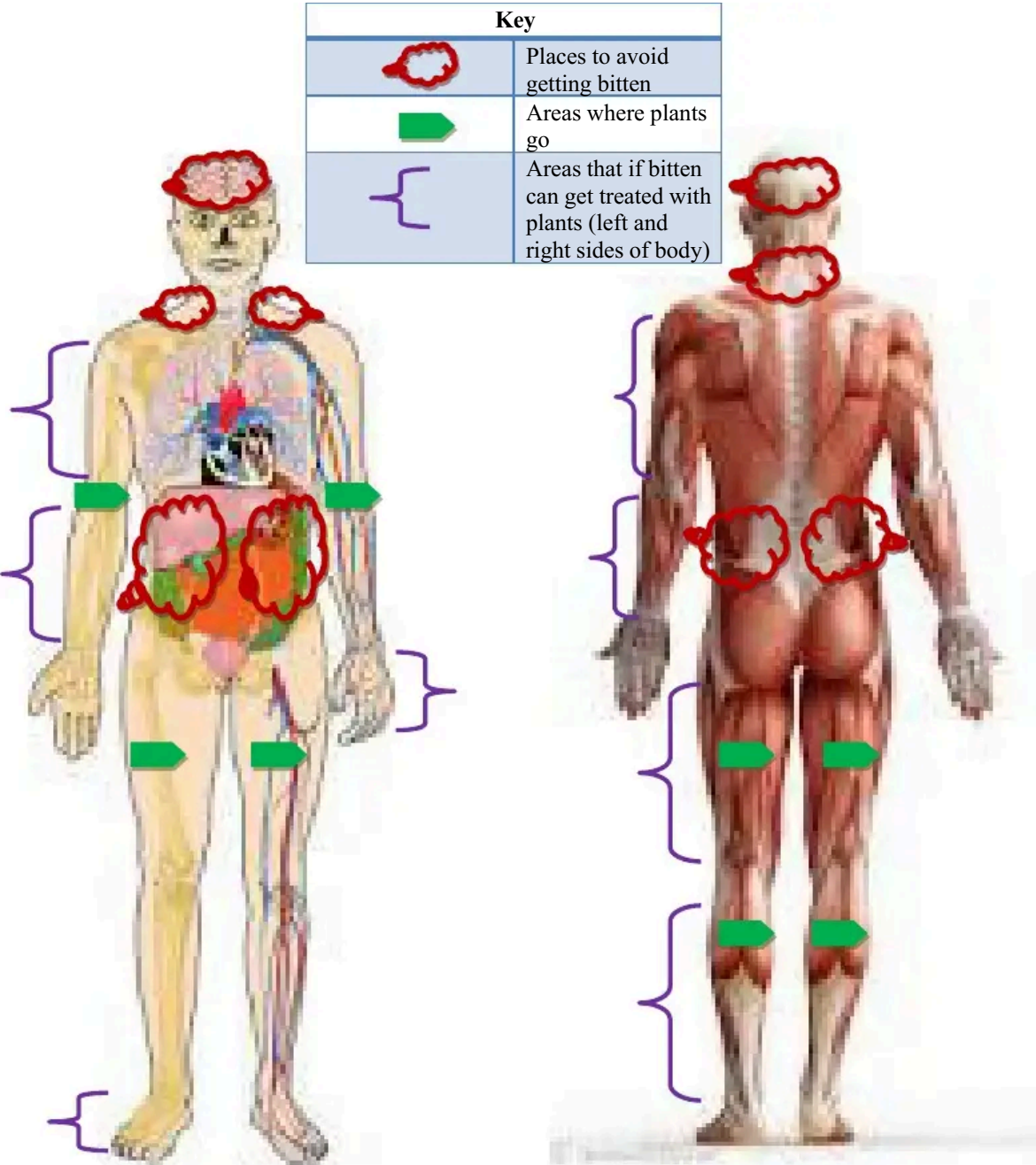
Having awoken from the rattle of what appeared to be the noise of a beating heart these "living dead" rose by the magic of a necromancer. Transmitted through a bite and attracted by the smell of blood this disease is known as **Mortem**. This disease affects the individual within a 15 minute limit yet it varies with each person's body. It begins with small rashes which later grow into bigger open skin protrusions that turn purple then black. This is then followed by twisted limbs extending outwards and orange foam coming out of the mouth.

Now, aside from a direct bite an individual can become a "zombie" by exposing the foam to an open wound. That is to say, that in roughly 25 minutes the individual will begin to show symptoms. However if washed away with lemon juice or lemonade it takes out the foam preventing the individual from turning. However, due to the exposure of the foam this person will experience a stomach ache and fever.

In addition, if anyone is bitten on a limb they **MUST** be treated with any natural state plants (Cactus water, substance from the Yucca, etc). **There is no need to cut off the exposed part of the body (hand, leg, etc)**. Simply find the nearest natural plant and apply it every 15 minutes for 3 consecutive times. However, there are particular places in the body that if bitten can kill you, thereby avoid being bitten in those places. These zombies can be eliminated by killing them with a shot through the head but

will continue to come back after 15 minutes unless burned. For these reasons, it is strictly advised that you follow the "Fire Drill" procedures.

Ultimately the goal is to take three classes at a time from each building into the cafeteria. Thereafter a truck or army tank will pass by every day in the afternoon to deliver students to their families. These same tanks will assure that no one gets left behind or is majorly hurt leading to death within the premises.



*Emergency Response Procedures*

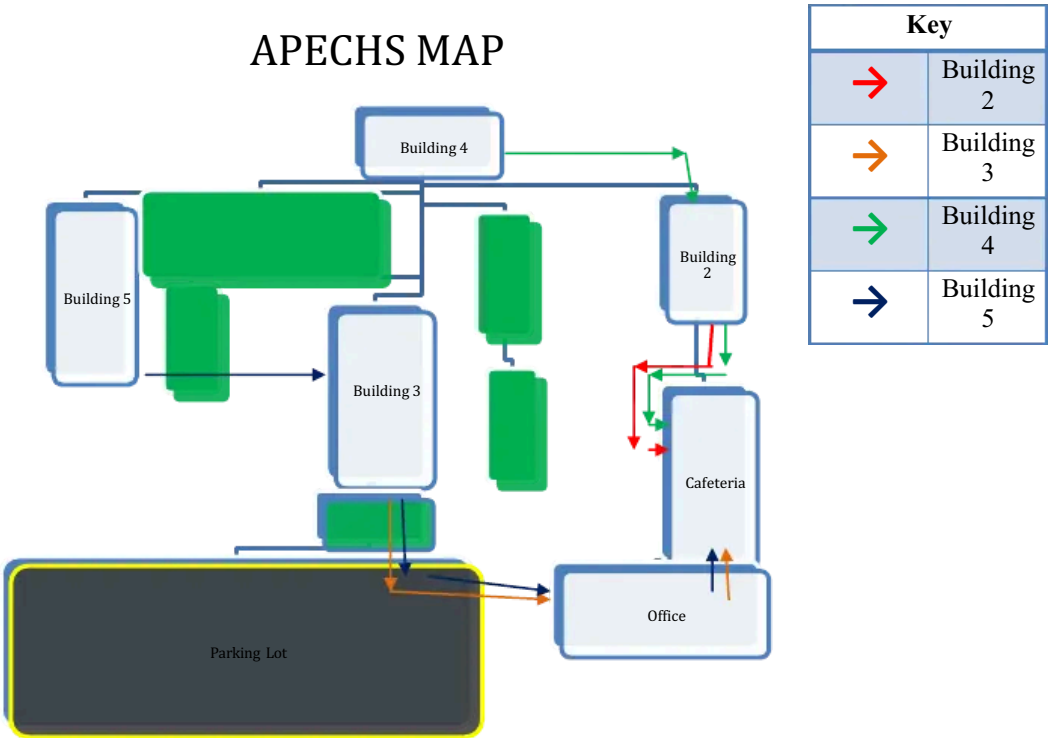
The plan would be to take students to the cafeteria where lunch bags are waiting for them. This would be done by taking all classes from each building individually by jumping them from one building to the next. The rest would stay in the building into later notified that the staff and students from the previous building were guaranteed food resources and those students from that building were reunited with their families. Below are the academic safety procedures and pathways that each building must take.

**Fire Drill (Red/Card)**

- Instruction stops when alarm goes off/informed in person
- Students and instructor exit classroom and move in single file line following pre-determined exit route(s)
- Students and instructor line up at staging area
- Emergency packet is used (roster) and attendance is taken
- Return to class when “All Clear” is given
- Complete “Drill” report and turn in to front office.

**Evacuation**

- Follow all “Fire Drill” procedures to primary staging area.
- Wait at primary staging area for instructions by STM/security/ admin. To secondary staging area
- Once at secondary staging area, line up students and again take attendance.
- Wait for further instructions to return to campus, stay at secondary staging area or board buses to alternate safe location (zone).



### Emergency Kit Checklist

Should we be “invaded” while in school, school policy clearly permits students of carrying proper weapons provided by the school. The students would wait within the classroom closet while the teacher provided each individual student with a weapon and backpack. This small backpack has first aid kit supplies that in case of injury while they are alone the students can heal themselves. This would also be recommended to use when you are with your family.



Things you must have in your backpack:	Check mark (✓)
Water	
Emergency blanket, clothes, sleeping bag	
Flashlights	
First aid kit	
Extra batteries	
Maps of the Area	
Walkie Talkies or Battery Powered/ Hand-crank radio	
Lemons and Plants	
Money	
Medications	
Food	
Multi-purpose supplies	
Sanitation/hygiene items	
Personal Documents	
Cell phone with charger	
Disaster Plan	

### Other Recommendations

In order to stay safe avoid going anywhere alone. If need be, go with three people at least. Also, make sure to get some plants (whichever they may be that are at your reach), lemons, and lemonade. Be ready with weapons because these zombies are aggressive and possess the ability to break through windows and if in numbers can break a door down. Nevertheless, turn on all lights and carry flashlights. They prefer the darkness and larger numbers will tend to gather in those dark places. Therefore it is advised to lock your doors and turn on your lights regardless of the time of day.

### Thank you

In simple words it is important for you to know that we are working to ensure each individual's protection. All we ask of you is that you please cooperate with us in every possible way and we will ensure your security and reunite you with your families. If any concerns or further questions do not hesitate to ask either member of the office faculty or myself.

Thank you for your time and consideration!

Best,

Brenda Brito  
Student Body President  
Arrowhead Park Early College High School